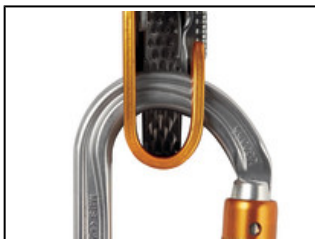


<b>Universe</b>	Professional
<b>Type</b>	Verticality
<b>Category</b>	Connectors
<b>Subcategory</b>	Light carabiners

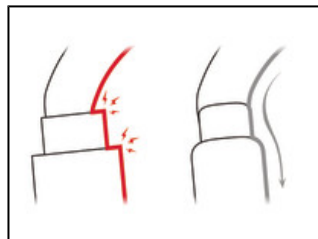


## OK

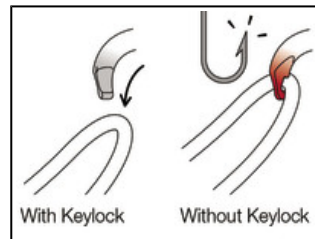
The lightweight OK carabiner is made of aluminum. It has an oval shape that allows optimal loading of devices with a wide cross-section, such as pulleys, rope clamps and mobile fall arresters. Its fluid interior design and Keylock system facilitate handling. It is available in three locking systems: automatic TRIACT-LOCK or BALL-LOCK system, or the manual SCREW-LOCK system. OK can be connected to the CAPTIV bar to favor positioning of the carabiner along the major axis, to limit the risk of it flipping and to keep it integrated with the device.



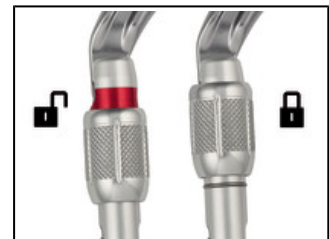
The symmetrical oval shape allows optimal loading of devices with a wide cross-section, such as pulleys, rope clamps and mobile fall arresters.



Fluid interior design of OK carabiners limits the risk of having a catch point and facilitates rotation of the carabiner.



To ensure optimal efficiency, OK carabiners use the Keylock system: the body/gate interface does not have a hook that could snag on anchors, ropes, harness equipment loops...



To facilitate equipment checks, SCREW-LOCK manual locking carabiners have a red band that is visible only when the carabiner is not locked.

---

**Short Description** Lightweight oval carabiner

---

- Selling Points**
- Symmetrical oval shape allows optimal loading of devices with a wide cross-section, such as pulleys, rope clamps and mobile fall arresters
  - Aluminum carabiner whose light weight reduces the weight of equipment the worker at height needs to carry
  - May be used with a CAPTIV positioning bar to favor loading of the carabiner along the major axis, to keep it integrated with the device, and to limit the risk of it flipping
  - Easier handling:
    - fluid interior design limits the risk of having a catch point and facilitates rotation of the carabiner
    - Keylock system to avoid any involuntary snagging of the carabiner
  - H cross-section:
    - ensures an optimal strength/weight ratio
    - protects markings from abrasion
  - Available in three different locking systems:
    - TRIACT-LOCK: automatic locking with triple-action gate opening
    - BALL-LOCK: automatic locking with triple-action gate opening, with lock indicator
    - SCREW-LOCK: the manual screw-lock with red band provides a visual warning when the carabiner is unlocked
  - Also available in black (TRIACT-LOCK and SCREW-LOCK)

- 
- Specification**
- Material(s): aluminum
  - Certification(s): CE EN 362, EAC
-

**Specifications by reference**

Reference(s)	M33A TL	M33A BL	M33A SL	M33A TLN
				
Weight	75 g	75 g	70 g	75 g
Locking system	TRIACT-LOCK	BALL-LOCK	SCREW-LOCK	TRIACT-LOCK
Color(s)	Gray	Gray	Gray	Black
Major axis strength	25 kN	25 kN	25 kN	25 kN
Minor axis strength	8 kN	8 kN	8 kN	8 kN
Open gate strength	7 kN	7 kN	7 kN	7 kN
Gate opening	22 mm	23 mm	22 mm	22 mm
Made in	FR	FR	FR	FR
Guarantee	3 years	3 years	3 years	3 years
Inner Pack Count	1	1	1	1
Quantity Per Box	20	20	20	20
EAN	3342540815834	3342540815858	3342540815810	3342540815841

Reference(s)	M33A SLN
	
Weight	70 g
Locking system	SCREW-LOCK
Color(s)	Black
Major axis strength	25 kN
Minor axis strength	8 kN
Open gate strength	7 kN
Gate opening	22 mm
Made in	FR
Guarantee	3 years
Inner Pack Count	1
Quantity Per Box	20
EAN	3342540815827

**Related product(s)** ASAP®  
ASAP® LOCK  
ASAP'SORBER