

# I|S|C

Solutions in Metal



## The latest addition to the ISC Trolley range... World's first patented trailing Anti-Rollback Cam (ARC)

### The Challenge

Lack of rider weight and/or environmental conditions such as head/side winds can cause the zip trolley to stop just short of the end of the zipline - and to exacerbate the problem, the zip trolley can then roll backwards leaving the rider stranded further out along the line. The operator must then perform a time consuming, long distance rescue procedure to retrieve the stranded rider. This can happen several times a day and can bring significant loss of throughput and earnings.

### The Anti-Rollback Cam (ARC) Solution...

The Anti-Rollback Cam is a simple device which can be retro-fitted to the ZipSpeed and Zippey Trolleys. During normal use, the cam trails, allowing the trolley to roll forwards, unhindered. However, as soon as the trolley begins to roll backwards, the cam is activated, bringing the trolley to an immediate halt. This anti-rollback function captures the progress of the trolley, which means that even when the trolley doesn't reach the end of the zipline, it cannot roll backward and hence rescue distance (and therefore, rescue time) is significantly reduced.

Some trolleys are fitted with one-way bearings which are supposed to stop the trolley from rolling backwards but tests and feedback have shown the ARCs to be a **much more effective and inexpensive solution**.

- Stops all backward movement (whether caused by wheels rolling or sliding)
- Machined from solid Aluminium, with hard-Anodised finish
- Can be retro-fitted/replaced on site
- The RP075 & RP076 Cam can be disengaged using the spring-loaded locking button
- Weight 174g (6oz)



To see the new Anti-Rollback Cam (ARC) in action

climb. work. rescue.



Photo courtesy of Zip World Zipbelow

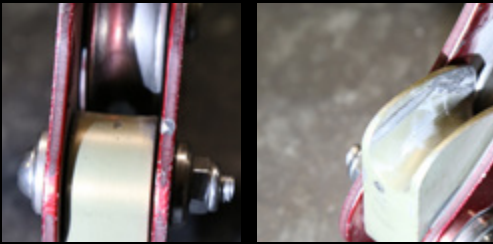


Photo courtesy of Zip World Titan



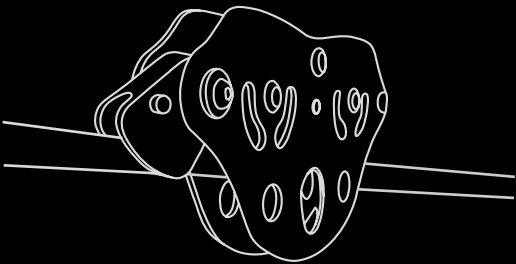
Photo courtesy of Zip World Velocity

**The ARC solution has been thoroughly trialled and evaluated by Zipworld ([www.zipworld.co.uk](http://www.zipworld.co.uk)) and even after extended use (many thousands of runs) wear is minimal!**

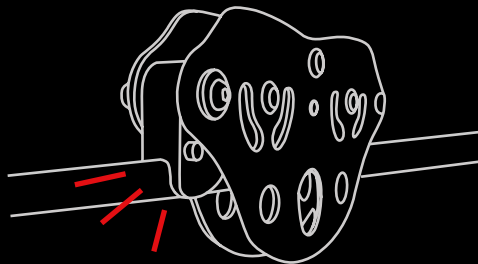


*"Zip World have been using ISC Anti-Rollback Cams (ARCs) on Zip World Velocity and Zip World Caverns for just over 6 months and on Zip World Titan for nearly a year. They have been a fantastic aid to our operations and are showing good longevity".*

**Emyr Bath**  
(Operation Inspection Coordinator)  
ZipWorld



Cam in neutral 'trailing' position



Cam activated

climb.  
work.  
rescue.

### Can the ARC be used with braking systems?

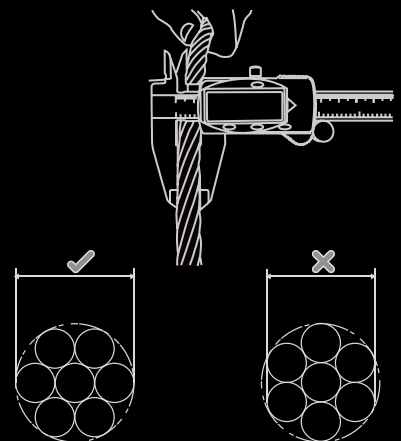
The Anti-Rollback Cam (ARC) is great for use with braking systems! As soon as the braking system has completed its function in slowing and subsequently stopping the forward movement of the trolley, the trolley can often begin to roll backwards! If not caught by a member of staff (who may have multiple lines to supervise), the rider can soon after find him/herself stranded mid-way down the zipline!

#### ARC Retro/Self-fit Cam Kits:

Part Code	Compatible with	Cable Diameter Options (mm)		
		12	13 (1/2")	16 (5/8")
ARC074A1	RP074 Zippey (all versions)	✓	•	•
ARC074A2	RP074 Zippey (all versions)	•	✓	•
ARC075A1	RP075 ZipSpeed Trolley	•	✓	•
ARC075A2	RP075 ZipSpeed Trolley	✓	•	•
ARC075B1	RP075 ZipSpeed Trolley	•	•	✓
ARC076A1	RP076 ZipSpeed Trolley	•	✓	•
ARC076A2	RP076 ZipSpeed Trolley	✓	•	•
ARC076B1	RP076 ZipSpeed Trolley	•	•	✓

(If your cable size is not listed please request a sample for evaluation)

#### Correct measuring of cable\*



**We can also supply the ARCs fully fitted and assembled with The Trolley, please contact for more information.**

**\*IMPORTANT** - due to the many different cables types and variables affecting usage we recommend that you carry out trial evaluations with a sample ARC on your chosen trolley and cable to ensure compatibility and suitability in the environment which you intend to use them. if your cable size is not listed please request a sample for evaluation.